



Marching Forward

Workplace Readiness: Extended Employment

🌸 March Memo

🌸 Welcome to the Team, Alyssa! 🌸

We're excited to introduce our new **Employment Transition Coordinator, Alyssa!** She's joining us to help our **Extended Employees** build community-integrated work skills and support our **hybrid participants** out in the community. 🌸

Please join us in welcoming Alyssa to the team—she's ready to make a positive impact and support everyone on their journey! 🙌

✉ **Email:** azito@cea-nj.org

☁ March Madness... But for Weather! ☁

One day it's warm and sunny, the next it's cold and rainy—who knows what March is up to?! 🌸 Spring is *trying* to make an entrance, but winter isn't ready to leave the party just yet. 🌸

So, be prepared for anything! Layers are your best friend—bring a jacket, maybe some sunglasses, and definitely an umbrella (just in case). No matter what the sky decides, at least we know brighter days are on the way! ☀🌸

- With the unpredictability of our winter weather, please remember: if you're ever unsure whether we're open or not, don't hesitate to give us a call at **908-782-1480, Extension 8** for the latest updates!

📦 Past Due: Action Needed! 📦

The **January 13th deadline has passed**, which means your paperwork is officially **overdue!** ⌚ If you haven't submitted it yet, now's the time!

📄 **What's needed?** Don't forget to turn in all required forms, including the **Participant Health Form**, which must be completed by a **physician.** 🤝

📎 **Forms are attached**, but let me know if you need a physical copy sent home.

? **Questions?** Feel free to reach out—we're happy to assist.

📢 Join Our Extended Employment Program!

Our Workplace Readiness Extended Employment Program is growing, and we're looking for new **Extended Employees** to join the team! ✨ If you know someone who's ready to gain work skills, build confidence, and be part of something great, we'd love to hear from them!

Have them reach out to me, **Kyra Horn, Director of Workplace Readiness and Adult Transition** to learn more.

- 📞 **Office:** 908-782-1480 x282
- 📱 **Cell:** 848-333-2985
- ✉️ **Email:** khorn@cea-nj.org



Yearly Paperwork 2025.pdf

[Download](#)

1.2 MB



Support Letter.pdf

[Download](#)

818.2 KB

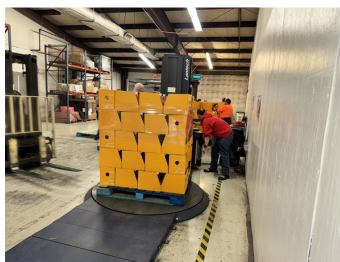


Here's the Latest!



🌟 Recap of Our Resource & Transition Fair! ✨

We had the pleasure of meeting some amazing vendors and sharing what makes CEA such a special place. ✨ It was a great opportunity to connect, learn, and highlight all the incredible



James is on the job! 🛠️

He's putting the finishing touches on the juice, wrapping it up and getting it ready to roll out! 🗨️ ✨ Great job, James—keep that momentum going! 📢



🌟 The Return of a New Job! ✨

Guess who's back, back again? A fresh job is back—tell a friend! 😊 ✨ Sunil and Erica are rocking our **Sample Card Job**, bringing their A-game to the production floor! ✨

work we're doing to support
our community. 📦 ✨
Thanks to everyone who
attended—let's continue to
grow and thrive together! 🌱

Stay tuned for more awesome
updates—this is just the
beginning! 🌱 🌱
#SampleCardSquad

CEA NEWSLETTER

Contact

